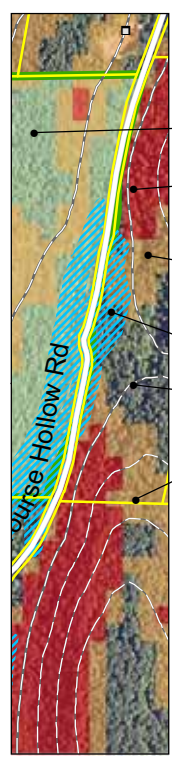


Route 5 Corridor - Town of Dummerston, Vt.



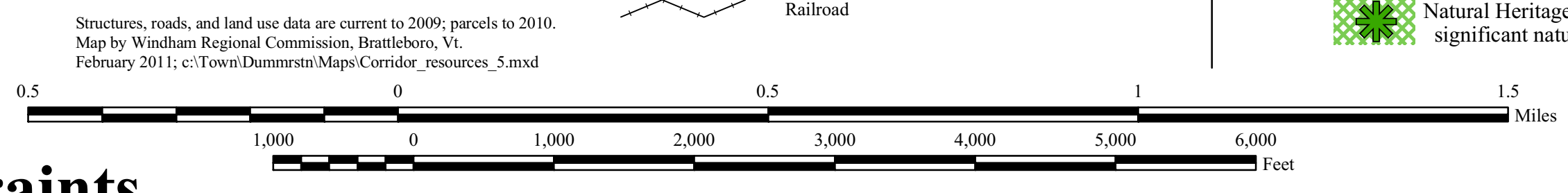
- Public/conserved land
- Slope 25% and greater
- Slope 15-25%
- Wetland
- 50-foot contour line
- Property line

- Commercial/Industrial Structure
- Public Structure
- Residential or Other Structure
- Cemetery
- Stream
- River or pond

- US or State Highway
- Interstate Highway
- Class 2 or 3 town highway - paved
- Class 2 or 3 town highway - unpaved
- Class 4 town highway - unpaved
- Legal Town Trail
- Private road/drive
- Railroad

- Wetlands
- Ag. lands (approximate)
- Deer Wintering Area (state mapped)
- Prime ag. soils
- Natural Heritage Data occurrence, plant or animal
- Natural Heritage Data occurrence, significant natural community

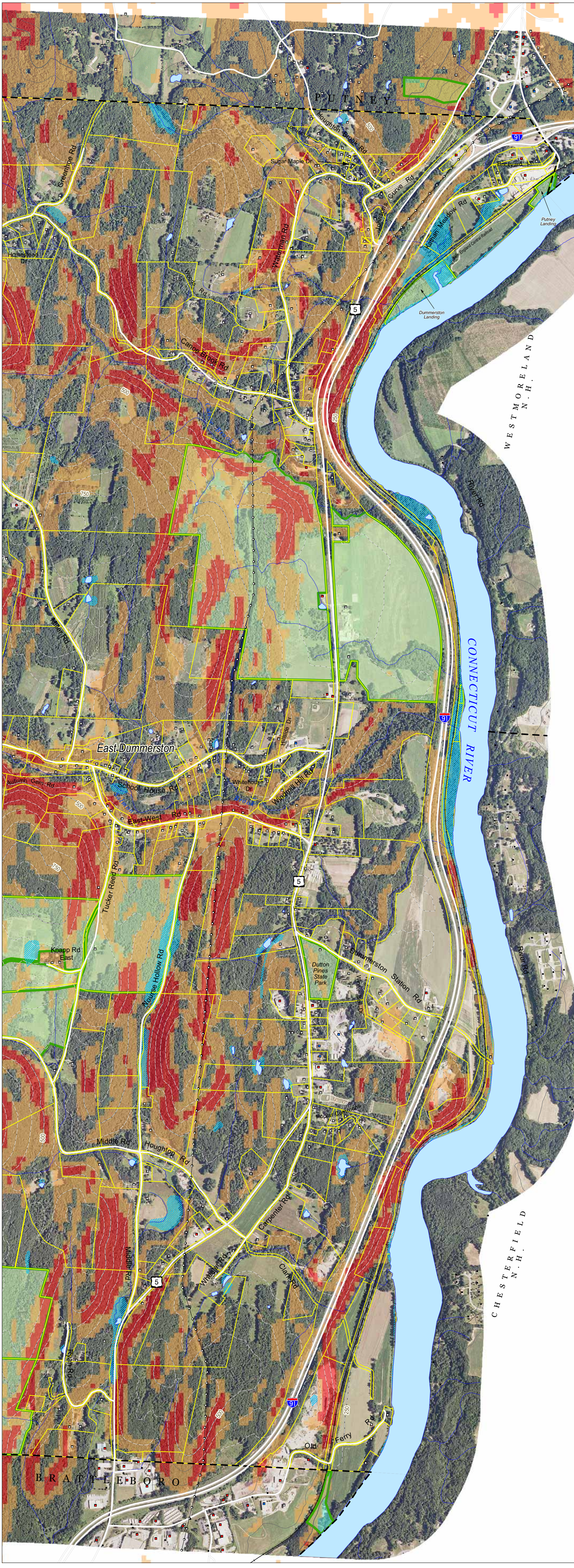
- Biodiversity Inventory Report data:
- Potential travel routes
 - Important connecting lands - needs improvement
 - Areas the merit special attention
 - Hemlock stand: confirmed deer wintering use
 - Hemlock stand: possible deer wintering habitat
 - Vernal pools; red border indicates ecologically significant pools
 - Significant riparian areas



Structures, roads, and land use data are current to 2009; parcels to 2010.
Map by Windham Regional Commission, Brattleboro, Vt.
February 2011; c:\Town\Dummerston\Maps\Corridor_resources_5.mxd

Orthophoto - constraints

scale 1:12,000 1" = 100'



Natural Resources

